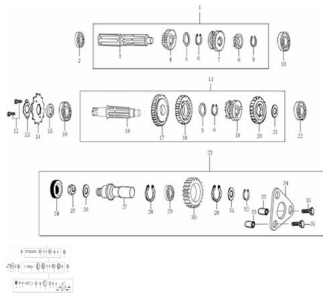


CONJUNTO TRANSMISION



Rating: Not Rated Yet

Price:

Variant price modifier:

Base price with tax:

Price with discount:

Salesprice with discount:

Sales price:

Sales price without tax:

Discount:

Tax amount:

[Ask a question about this product](#)

| Description | Ref. | Título | Código |
|-------------|------|--------------|------------|
| | 1 | | 54-23220 |
| | 2 | | 54-92102-2 |
| | 3 | EJE PRIMARIO | 54-23221 |
| | 4 | | 54-23222 |
| | 5 | | 54-93309 |
| | 6 | CHAVETA, | 54-23226 |

MOTOR : CONJUNTO TRANSMISION

| Ref. | Título | Código |
|------|--------------------|------------|
| 7 | | 54-23222-1 |
| 8 | | 54-23224-1 |
| 9 | CHAVETA 12 | 54-B0089-3 |
| 10 | | 54-92102 |
| 11 | | 54-23240 |
| 12 | TORNILLO M6X10 | 54-B0578 |
| 13 | TRABA PIÑON | 54-23402 |
| 14 | PIÑON DE SALIDA | 54-23401 |
| 15 | RETEN ACEITE | 54-90303 |
| 16 | EJE SECU NDARIO | 54-23241 |
| 17 | | 54-23243 |
| 18 | | 54-23242 |
| 19 | | 54-23242-1 |
| 20 | | 54-23242-2 |
| 21 | | 54-93301-6 |
| 22 | | 54-92102-4 |
| 23 | | 54-23601 |
| 24 | TUERCA FI | 54-23605 |
| 25 | TUERCA M8 | 54-B0617-1 |
| 26 | | 54-93301-7 |
| 27 | EJE DE EN | 54-23602 |

MOTOR : CONJUNTO TRANSMISION

| Ref. | Título | Código |
|------|-------------------|--------------------------|
| | | GRANAJE DE REVERSA |
| 28 | SEGURO | 54-B0089 |
| 29 | | 54-92102 |
| 30 | | 54-23604 |
| 31 | | 54-93301-8 |
| 32 | CHAVETA 12 | 54-B0089-3 |
| 33 | PERNO 8X8 | 54-91521-3 |
| 34 | SOPORTE | 54-23603 |
| 35 | TORNILLO M6X20 | 54-B0578-1 |