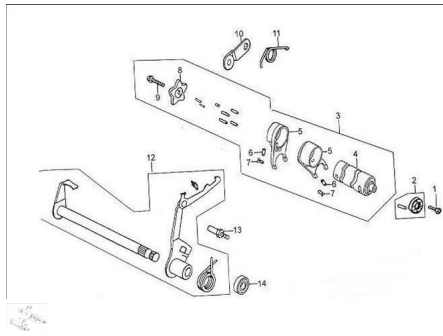


PEDAL ACCIONAMIENTO DE CAMBIOS



Rating: Not Rated Yet

Price:

Variant price modifier:

Base price with tax:

Price with discount:

Salesprice with discount:

Sales price:

Sales price without tax:

Discount:

Tax amount:

[Ask a question about this product](#)

Description

| Ref. | Título | Código |
|------|--|---------------|
| 1 | TORNILLO M6X16 | 89-B000700106 |
| 2 | PEDAL DE CAMBIO, LLAVE PLATO DE SUJECIÓN | 89-88004-G011 |
| 3 | COMP TAMBOR PEDAL DE CAMBIO | 89-24200-G011 |
| 4 | CONJUNTO ÁRBOL DE LEVAS | 89-24213-G011 |
| 5 | JUNTA CÁMARA | 89-24101-G011 |
| 6 | PERNO GUÍA | 89-24102-D002 |
| 7 | ABRAZADERA | 89-24103-D002 |

MOTOR : PEDAL ACCIONAMIENTO DE CAMBIOS

| | Ref. | Titulo | Código |
|----|------|-----------------------------------|-----------------|
| 8 | | JUNTA VOLANTE | 89-24202-G011 |
| 9 | | TORNILLO M6X22 | 89-B008230006-3 |
| 10 | | CHAVETA LOCALIZADORA | 89-2434A-G011 |
| 11 | | RESORTE | 89-24242-G011 |
| 12 | | CONJUNTO ACCIONAMIENTO DE CAMBIOS | 89-24300-G011 |
| 13 | | TORNILLO AUTOBLOQUEANTE | 89-24203-D002 |
| 14 | | RETEN 11.6X24X10 | 89-90301-D002 |