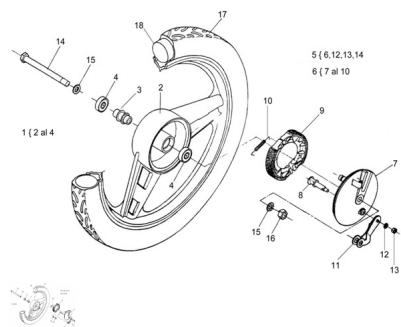


RODADOS DELANTERA



Rating: Not Rated Yet

Price:

Variant price modifier:

Base price with tax:

Price with discount:

Salesprice with discount:

Sales price:

Sales price without tax:

Discount:

Tax amount:

[Ask a question about this product](#)

Description

| Ref. | Título | Código |
|------|--|---------------|
| 1 | Conjunto Rueda delantera integral | 240404000GR1P |
| 2 | Llanta delantera integral pintada | 240404101GR1P |
| 3 | Subconjunto espaciador | R280402102 |
| 4 | Rodamiento 6201 2RS1 | R460301922 |
| 5 | Tapa maza delantera armada con palanca | R230405001GR1 |
| 6 | Tapa maza delantera pintada gris | R230409001GR1 |
| 7 | Conjunto leva de freno | R230408000 |

ESTRUCTURA : RODADOS DELANTERA

| | Ref. | Título | Código |
|----|------|-------------------------------------|------------|
| 8 | | Conjunto Zapata | R230407000 |
| 9 | | Resorte zapata de freno | R230406910 |
| 10 | | Conjunto palanca de freno delantero | R230410001 |
| 11 | | Arandela plana ø6 | 100306 |
| 12 | | Tuerca hexagonal autobloqueante | 700314040 |
| 13 | | Eje maza delantero | R230403920 |
| 14 | | Arandela plana ø12 | 100612 |
| 15 | | Tuerca Hexagonal Autobloqueante M12 | 230403925 |
| 16 | | Cubierta 2 ¼ x 16 | R230501940 |
| 17 | | Cámara 2 ¼ x 16 | R260400025 |

