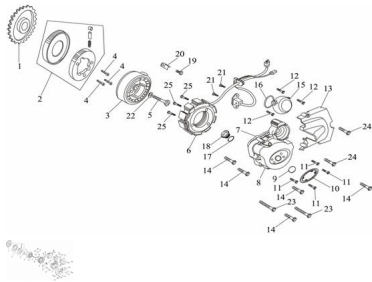


TAPA CARTER LADO VOLANTE / VOLANTE MAGNETICO



Rating: Not Rated Yet

Price:

Variant price modifier:

Base price with tax:

Price with discount:

Salesprice with discount:

Sales price:

Sales price without tax:

Discount:

Tax amount:

[Ask a question about this product](#)

| Description | Ref. | Título | Código |
|-------------|------|----------------------------------|----------|
| | 1 | Engranaje de acople de generador | |
| | 2 | Conj. Acople de generador | |
| | 3 | Conj. Rotor | |
| | 4 | Tornillo M8x18 | 20-80175 |
| | 5 | Tornillo | |
| | 6 | Conj. Estator | |
| | 7 | Junta de | |

MOTOR : TAPA CARTER LADO VOLANTE / VOLANTE MAGNETICO

| Ref. | Título | Código |
|------|--|--|
| | | cubierta de semicárter izquierdo |
| 8 | Cubierta de semicárter izquierdo | |
| 9 | O-ring 27x2.5 | 20-80140 |
| 10 | Tapa de logo | |
| 11 | Tornillo M6x12 | 20-80160 |
| 12 | Tornillo M6x20 | 20-80165 |
| 13 | Cubierta de piñón | |
| 14 | Tornillo M6x40 | 20-80180 |
| 15 | Tapa de engranaje | |
| 16 | O-ring 63x3 | |
| 17 | O-ring 13.8x2.5 | |
| 18 | Tapón | |
| 19 | Tornillo M6x12 | 20-80160 |
| 20 | Placa de presión 2 | |
| 21 | Tornillo M5x16 | |
| 22 | Arandela | |
| 23 | Tornillo M6x50 | 20-80190 |
| 24 | Tornillo M6x20 | 20-80165 |
| 25 | Tornillo M5x25 | |

