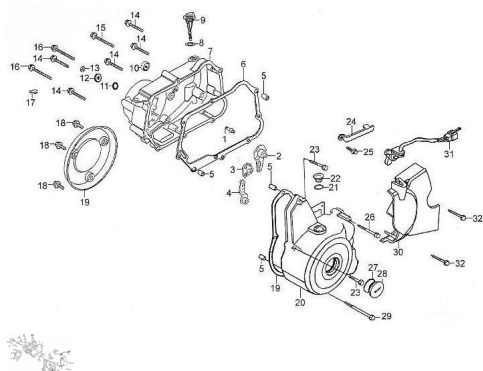


TAPA CARTER



Rating: Not Rated Yet

Price:

Variant price modifier:

Base price with tax:

Price with discount:

Salesprice with discount:

Sales price:

Sales price without tax:

Discount:

Tax amount:

[Ask a question about this product](#)

Description

| Ref. | Título | Código |
|------|---------------------------------|---------------|
| 1 | TORNILLO DE AJUSTE, EMBRAGUE M8 | 89-91112-G011 |
| 2 | COMPONENTES PLATO DE LEVAS | 89-2245A-G011 |
| 3 | BALANCÍN EMBRAGUE COMP. | 89-22440-G011 |
| 4 | LEVA DE EMBRAGUE | 89-2245A-G011 |
| 5 | PASADOR GUÍA 8X12X6.3 | 89-91501-D002 |
| 6 | JUNTA, TAPA DERECHA CARTER | 89-90206-HZ31 |
| 7 | TAPA CARTER DERECHA | 89-12421-G011 |
| 8 | O-RING 18X3X3.5 | 89-90106-D002 |
| 9 | VARILLA MEDIDOR DE ACEITE | 89-14301-G011 |

DUE CLASSIC MOTOR : TAPA CARTER

| | Ref. | Título | Código |
|----|------|--|-----------------|
| 10 | | RETEN 13.7X24X5 | 89-90304-D002 |
| 11 | | O-RING 8X1.8 | 89-90122-G011 |
| 12 | | ARANDELA 8 | 89-B000950008 |
| 13 | | TUERCA M8 | 89-B617000800 |
| 14 | | TORNILLO M6X40 | 89-B166740006-4 |
| 15 | | TORNILLO M6X80 | 89-B166740006-5 |
| 16 | | TORNILLO M6X65 | 89-GB16674000 |
| 17 | | BRIDA, ALTO VOLTAJE | 89-11003-D002 |
| 18 | | TORNILLO M6X12 | 89-B008230006 |
| 19 | | TAPA DECORATIVA MOTOR LADO EMBRAGUE | 89-90204-G011 |
| 20 | | TAPA CARTER IZQUIERDA (VOLANTE) | 89-12301-G011 |
| 21 | | O-RING 13.8X2.65 | 89-90102-G011 |
| 22 | | TAPA (CUBRE PIÑÓN) | 89-12303-G011 |
| 23 | | TORNILLO M6X32 | 89-B166740006-6 |
| 24 | | CAMBIO DE VELOCIDADES, PLATO INTERRUPTOR | 89-88002-G011 |
| 25 | | TORNILLO M6X12 | 89-B166740006-7 |
| 26 | | TORNILLO M6X25 | 89-B166740006-8 |
| 27 | | O-RING 27.4X2.4 | 89-90107-G011 |
| 28 | | TAPÓN DEL CARTER LADO EMBRAGUE | 89-12304-G011 |
| 29 | | TORNILLO M6X70 | 89-B166740006-9 |
| 30 | | TAPA PIÑÓN | 89-12302-G031 |
| 31 | | CABLE INTERRUPTOR CAMBIO DE VELOCIDADES | 89-8803B-G011 |
| 32 | | TORNILLO M6X25 | 89-B166740006-0 |